

Versatronics RV pick & place machine spares

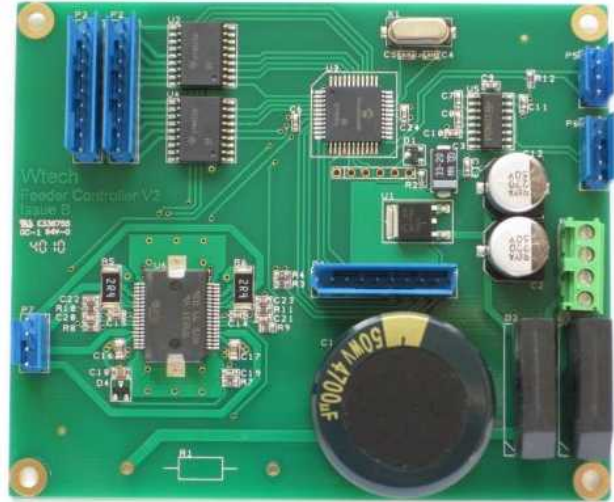
The following new manufactured spares are available from W Technology. info@wtechnology.co.uk

Feeder Controller.

Offers the following improvements:

- Ramped movements for reduced tape ripping.
- Faster feeds.
- Smaller, lighter, and no heatsink needed.
- Buffered indexes.
- Special firmware for 24mm feeder.
- Separate power block no longer needed.
- Will allow older feeders to be used with newer machines.

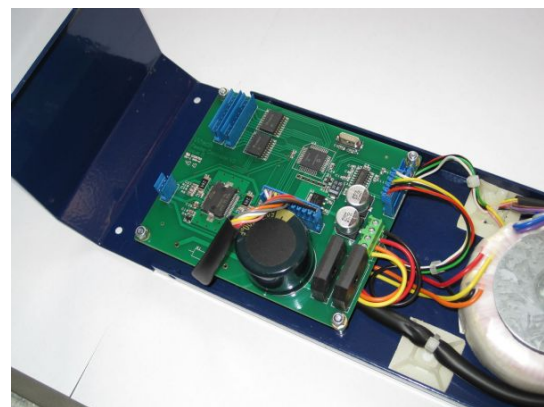
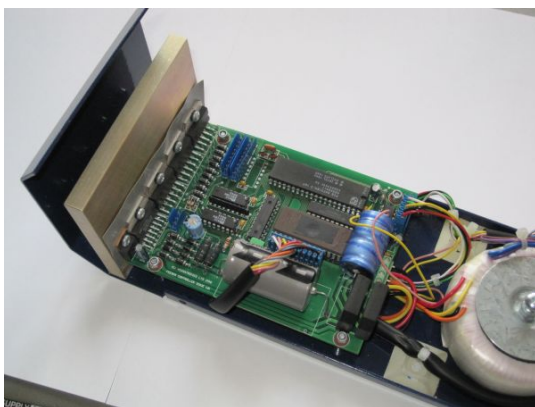
While still being a drop-in replacement.



Buffered indexes mean that unlike the original, when the controller receives a feed command while it is still executing a previous index, the new one is stored until the controller is ready to action it. The original controller ignored it – this is why double index parts (for example a diode on 12mm tape) placed close to the feeder don't index correctly.

Special firmware for 24mm feeders makes use of the spare dip switches to select multiple indexes for a single index command. This gives two main advantages: 1) multiple index parts feed much faster, and 2) parts large enough to require multi-image vision will not index correctly because of bugs in RVplace – they only ever index 1x 4mm. Using this function you can again place these parts automatically.

Newer Versatronics feeders have a modification in the form of a power block that is wired to the controller PCB. Older feeders need this to work with newer machines. The Wtech controller doesn't require this at all (it can be removed if fitted), meaning older feeders can then be used with all machines.



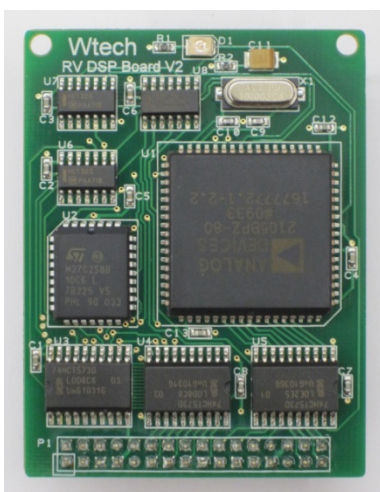
ISA Card.



Replacement ISA card that is installed in the machine's PC. Old cards can develop problems with communication with the arm control board and feeders and also issues with axis control. Both these result in error messages on the PC. Drop-in replacement for original.

DSP Daughter Cards.

Designed to improve reliability. Original design suffers problems with multiple dry joints. Also unreliable operation at low temperature resulting in axis errors when opening RVplace. Improved PCB design uses sensible design rules, in particular through connections, for longer service life. Drop-in replacement for original.

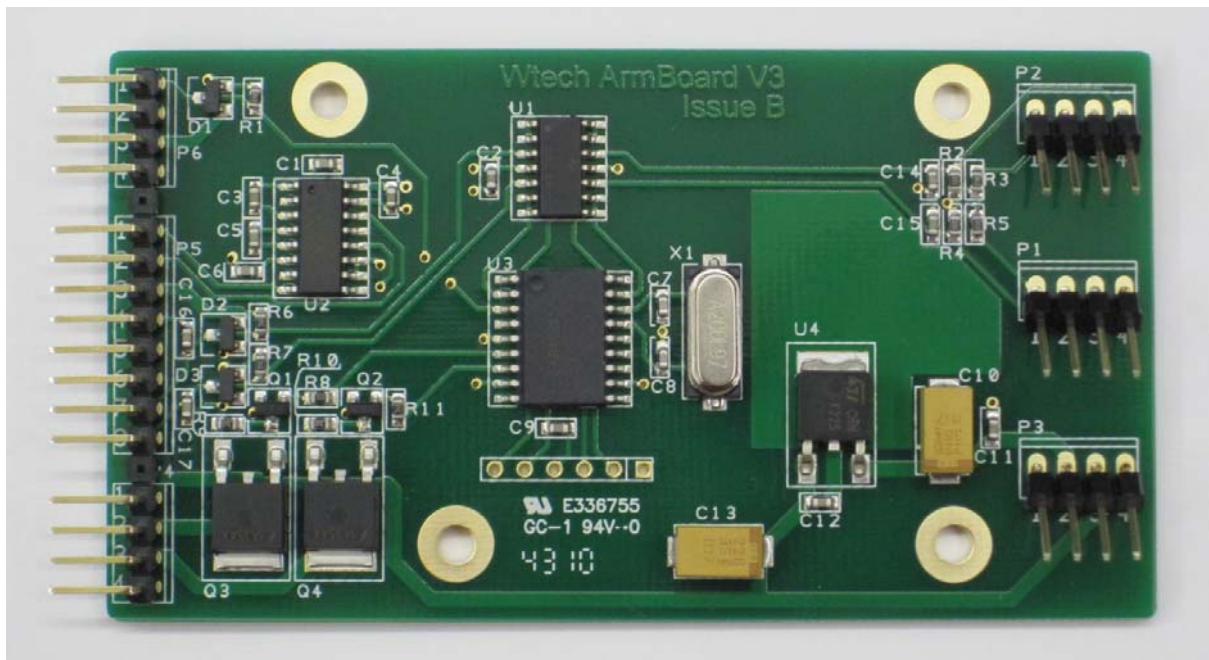


New DSP card

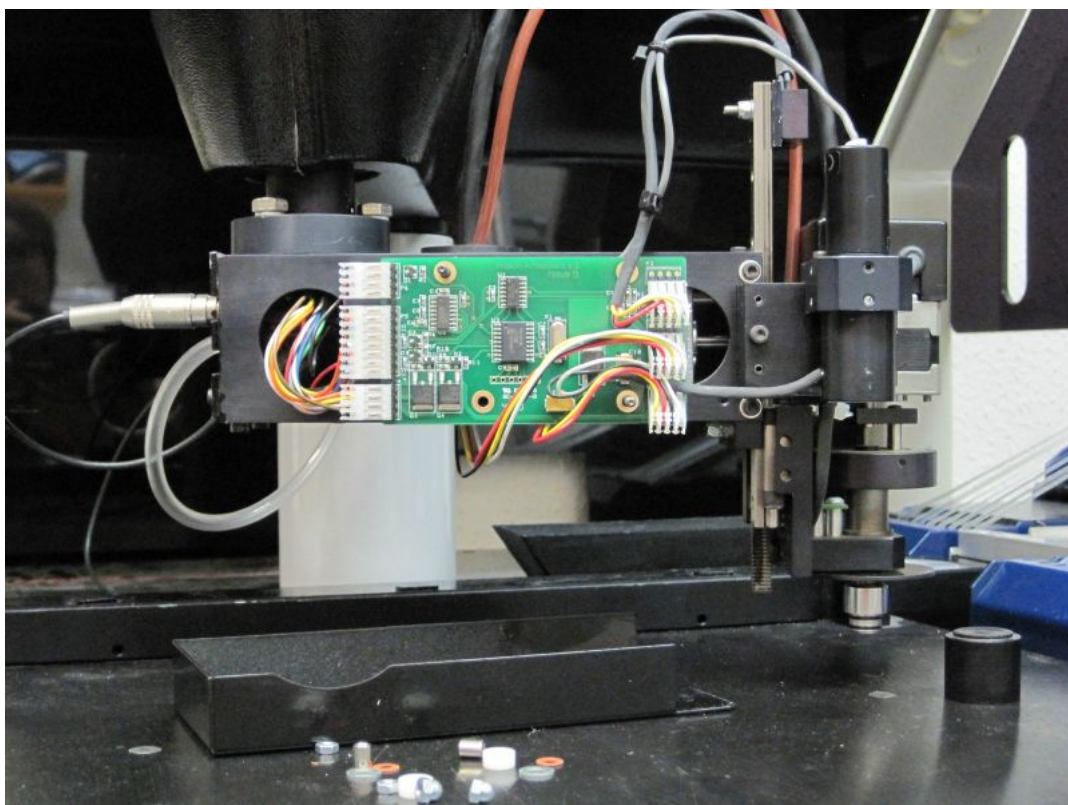


Fitted to ISA card (new one on right, old one on left)

Arm Controller Card.

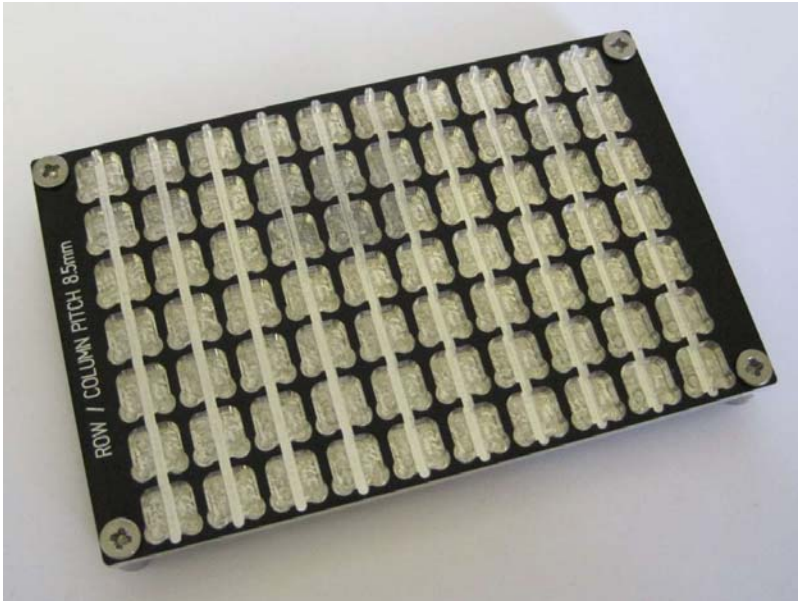


- Replaces obsolete parts on original.
- Mechanical relays replaced with MOSFETs.
- Smaller, lighter design.
- Connectors on left spaced out to avoid incorrect fitting.
- Drop-in replacement for original.
- Wired-on regulator on original no longer needed.

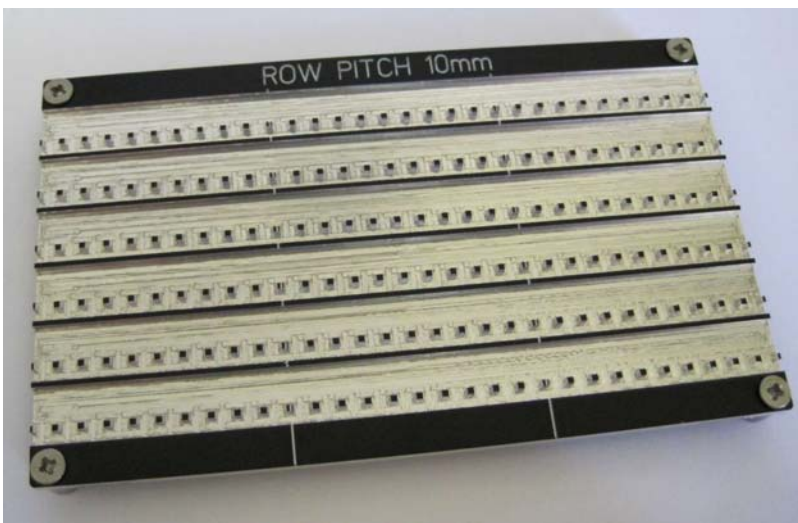


Component Trays.

Trays for loose components or parts that can't be placed from feeders. Many designs available, and custom trays can be designed and made for almost any component. Trays have magnetic feet to hold them to placement area securely.



6.3x6.3mm surface mount electrolytic capacitor tray.



Cut tape tray – 6 rows of 30 parts at 4mm.

Other trays available:

- 8x8mm electrolytic capacitors
- 10x10mm electrolytic capacitors
- 12.7x10mm inductors (eg Bourns SDR1005)
- SM HC-49 crystals
- SM-B diodes
- 12.7x12.7mm box inductors (eg Bourns SRR1208)

Price list.

Feeder Controller:	£115
ISA Card:	£235
DSP Daughter Board:	£ 72 *Buy 3 and get the 4 th free*
Arm controller:	£ 80
Component Trays (standard types)	from £60
Custom Component Trays	Email specifications for quotation.

Prices are ex-VAT and ex-works.

All products are made to order and fully tested in an RV1s before shipping.

April '16